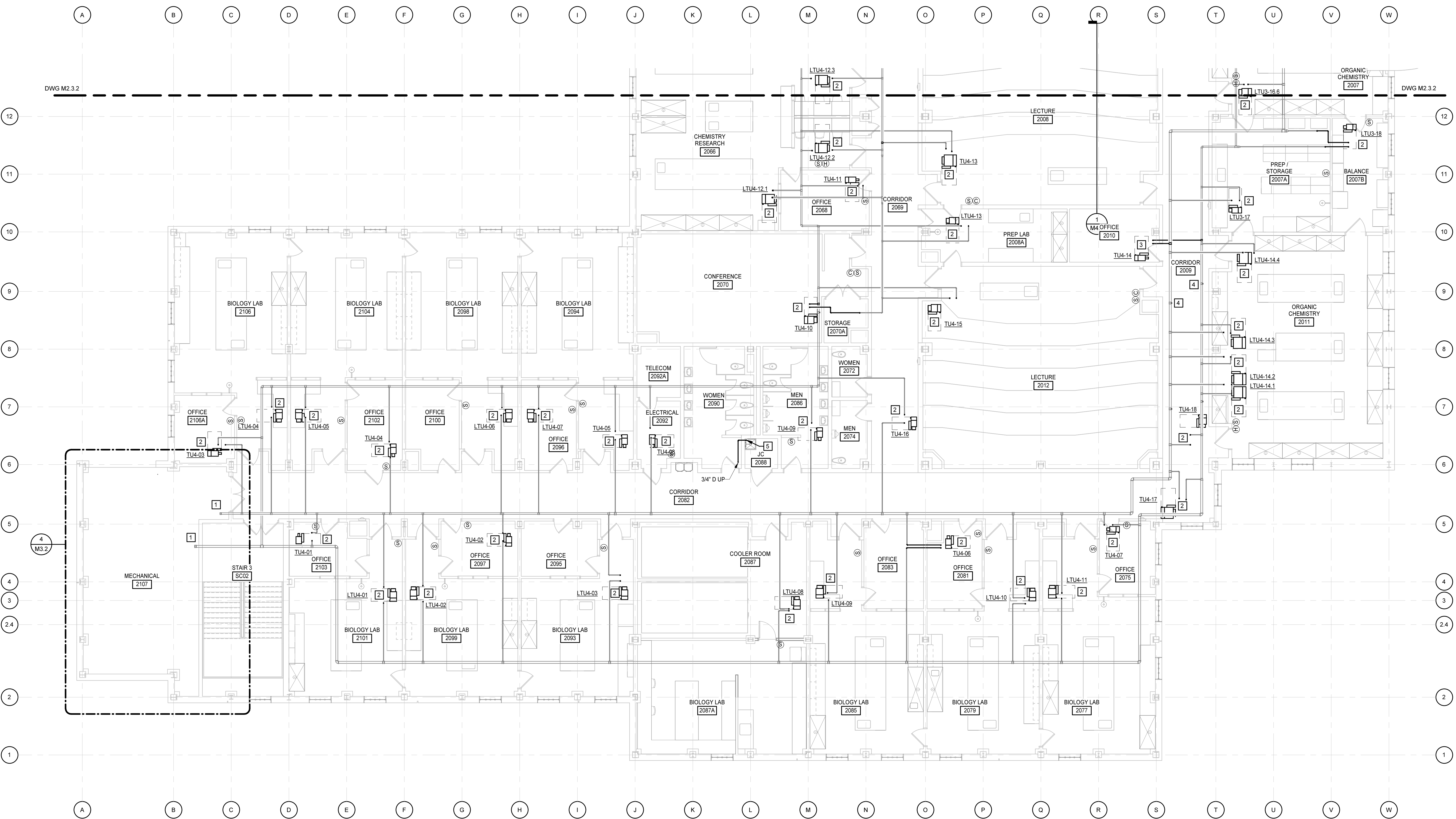


3/25/2019 4:32:46 PM



SECOND FLOOR PLAN - PART B - PIPING

1/8" = 1'-0"

KEYNOTES

APPLIES TO THIS DRAWING

- 1 REFER TO ENLARGED PLAN FOR CONTINUATION.
- 2 CONNECT TERMINAL UNIT TO EXISTING HWS & HWR PIPING RUNNOUTS. CUT AND REROUTE RUNNOUTS AS REQUIRED TO INSTALL ALL VALVES AND ACCESSORIES. REFER TO COIL CONNECTION DETAIL. REFER TO TERMINAL UNIT SCHEDULE FOR MINIMUM RUNNOUT SIZE.
- 3 CONNECT TERMINAL UNIT WITH NO PIPING RUNNOUTS TO MAIN. REFER TO TERMINAL UNIT SCHEDULE FOR MINIMUM RUNNOUT SIZE.
- 4 CAP EXISTING RUNNOUT.
- 5 DISCHARGE CONDENSATE DRAIN 6" ABOVE MOP SINK.



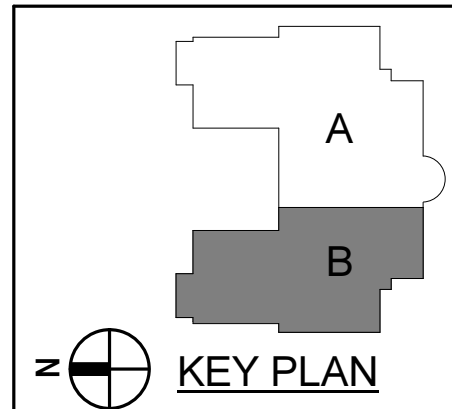
Dobo Hall Renovation - Package A

SCO PROJECT NO. 18-19798-01A

UNC Wilmington

4978 CAHILL DR, WILMINGTON, NC 28403

PROJECT NO.	DATE
580999	MARCH 27, 2019
REVISIONS	
DATE	DESCRIPTION



1/8" = 1'-0"

SECOND FLOOR
PLAN - PART B -
PIPING

M2.4.2

MOSELEYARCHITECTS

911 N. WEST STREET, SUITE 205 RALEIGH, NORTH CAROLINA 27603
PHONE (919) 845-0691
MOSELEYARCHITECTS.COM